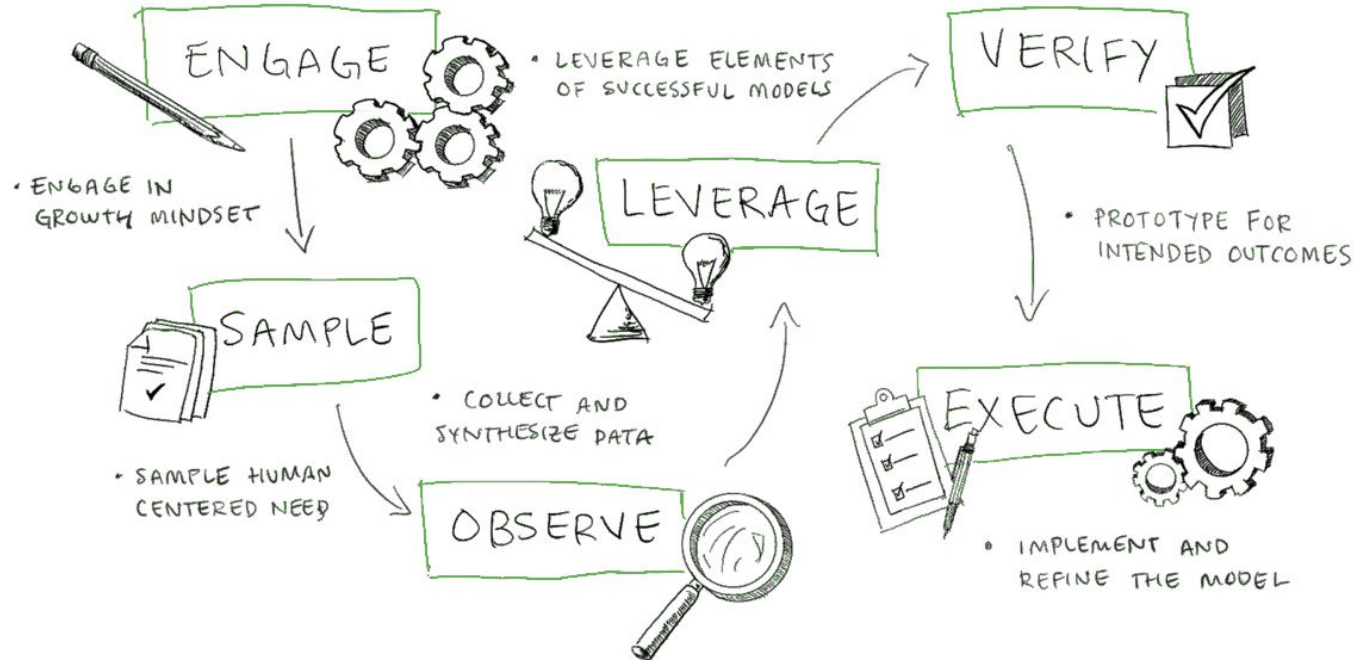




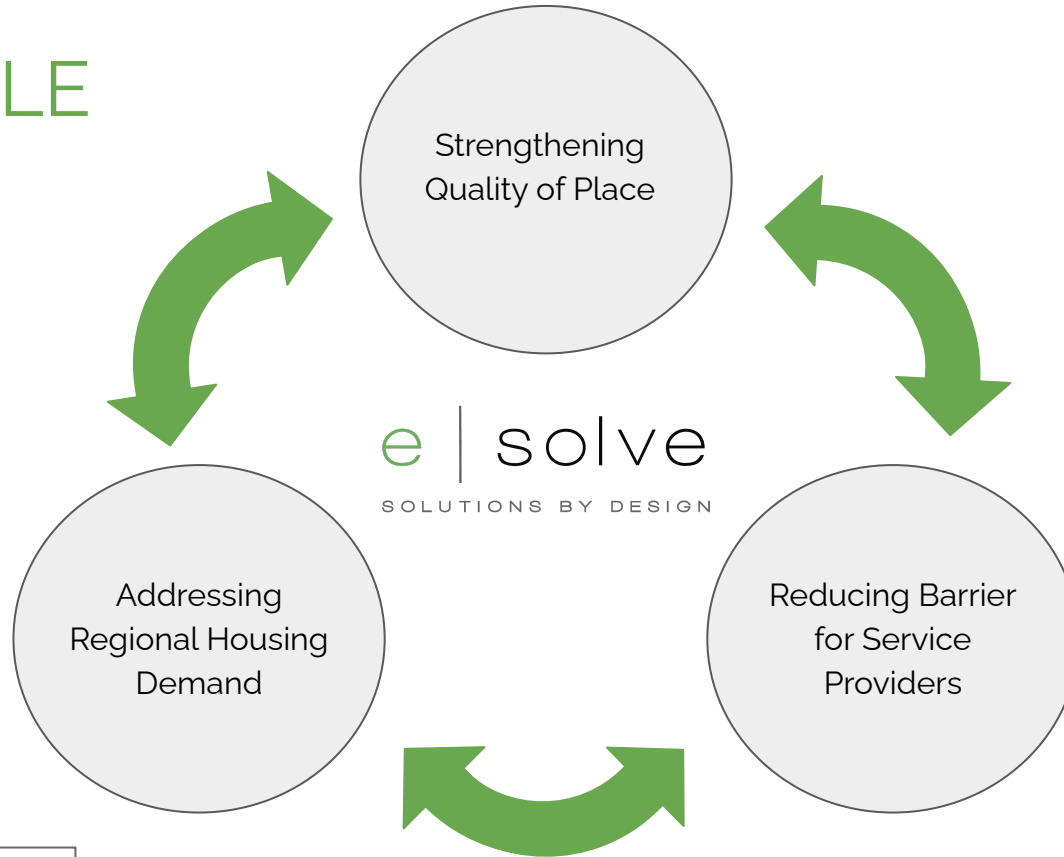
Housing Solutions PBL Grant Opportunity

# ABOUT US

## THE e|solve PROCESS



# OUR ROLE



# OVERVIEW OF THE OPPORTUNITY

## HISTORY / BACKGROUND

eSolve has partnered with a non-profit organization to develop a creative housing solution in the Indiana Uplands. Utilizing regional housing studies, independent research, and feedback from key stakeholders, the opportunity being presented today will use dollars to **develop, design, refine,** and **build** a creative housing model that eSolve will present to client.

# OVERVIEW OF THE OPPORTUNITY

## WHAT THIS CREATIVE SOLUTION LOOKS LIKE:

Successful applicant organization(s) will design and fabricate 2 “tiny homes” that are constructed from shipping containers (provided by eSolve). These tiny home prototypes will inform the planning, decision making, and construction of unique housing units for eSolve's client, **as well as** map a pathway for future school-community partnerships.

# SCHOOL PBL OPPORTUNITY

## HOW THIS RELATES TO PROJECT BASED LEARNING (PBL)

- > Authentic and Relevant: this tackles a real-world problem
- > Design Thinking Process
- > Hands-On Learning
- > Community Partnerships
- > Collaboration
- > Student Input and Design
- > Employable Knowledge and Skills
- > Public Presentation

# GOALS OF THIS GRANT

| <b>GOAL 1</b> | Satisfy Client's Product Demands               | <b>Goal 2</b> | Empower Trade and Skill Development through PBL |
|---------------|--|---------------|---|
| 1.1           | Prototype creative housing solution            | 2.1           | Schools engage with community partners          |
| 1.2           | Identify challenges and success of model       | 2.2           | Student-led project management and execution    |
| 1.3           | Measure sustainability of model implementation | 2.3           | Course and curriculum alignment                 |

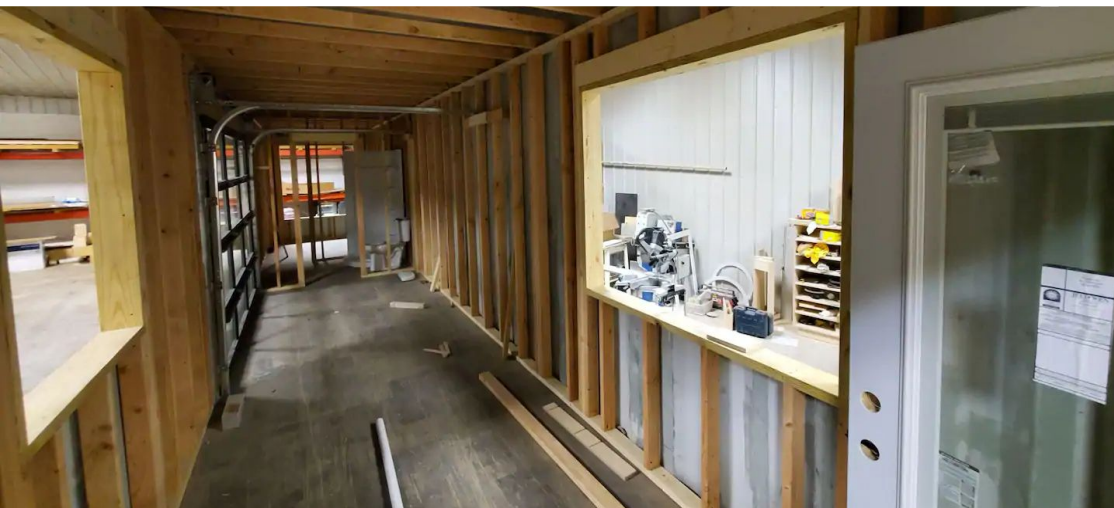
# EXAMPLES OF TINY HOMES



# WHY TINY HOMES?

- > Sustainable and green
- > Demand for housing in the region
- > Cost effective
- > Durable
- > Build time
- > Energy efficient
- > Prototype mobility
- > Repurposable













# THE PROCESS

## eSolve Role:

- > Support PBL process
- > Weekly check-ins with class
- > Provide container and funding
  - ↳ \$5,000, additional ask opportunity at the end of BENCHMARK 3
- > Publicity and marketing

## School Role:

- > Commit to prototyping the tiny home
- > Set timeline of launch and benchmarks
- > Create project plan and manage budget
- > Engage with community partners



# HOW WILL YOUR SCHOOL BENEFIT?

- > Employable Trade & Workforce Skills
- > PBL
- > CTE
- > Novel Student Learning Opportunity
- > Real-World Application of Learning
- > Student and Community Collaboration
- > Publicity

# GRANT TIMEFRAME

|                    |                       |
|--------------------|-----------------------|
| <b>January 21</b>  | Announcement Webinar  |
| <b>January 29</b>  | Submit Questions      |
| <b>February 2</b>  | Questions Answered    |
| <b>February 5</b>  | Letters of Intent Due |
| <b>February 12</b> | Applications Due      |
| <b>February 26</b> | Recipients Announced  |
| <b>October 1</b>   | Grant Complete        |



# NEXT STEPS

Submit a list of questions to [PBL@eSolveSolutions.org](mailto:PBL@eSolveSolutions.org)

- Use the subject line “**PBL Opportunity Questions**”
- Submit questions by **1/29/2021**
- Answers to questions will be returned via email by **2/2/2021**

# NEXT STEPS

Provide Letter of Intent to apply before **2/5/2021**

- Include signatures and contact information from superintendent and staff point contact
- Include commitment to complete project by **October 1, 2021** if awarded grant
- Briefly explain course alignment or sponsoring class/club
- Briefly explain capacity to complete project

# NEXT STEPS

Continue to visit: <https://www.esolvesolutions.org/pbl-opportunity>

- Webinar is recorded and posted
- This presentation is linked
- Grant timeline is visible